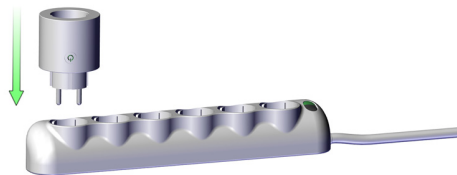
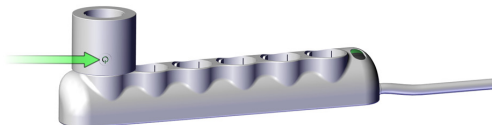


ASSOCIAZIONE NIDO SMART PLUG

- 1.** Collegare la NIDO SMART PLUG alla presa elettrica.



- 2.** Premere il pulsante della NIDO SMART PLUG per 5 secondi, attendere che la luce della NIDO SMART PLUG inizi a lampeggiare.



- 3.** Premere il pulsante WPS di NIDO per 1-3 secondi fino a quando non compare il led giallo.



- 4.** Aprire l'applicazione NIDO e configurare la NIDO SMART PLUG.



▶ VIDEOTUTORIAL

Per scoprire tutte le funzioni della NIDO app guarda i nostri video tutorial sul nostro canale Youtube.



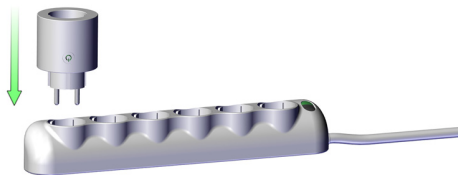
**SCARICA E CONSULTA
IL MANUALE UTENTE**

nidopro.com/download/manuale-utente-nido.pdf

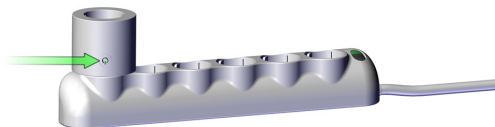
NIDOTM
nidopro.com

ASSOCIATION NIDO SMART PLUG

- 1.** Connect the NIDO SMART PLUG to the electrical socket.



- 2.** Press the NIDO SMART PLUG button for 5 seconds, wait for the NIDO SMART PLUG to start blinking..



- 3.** Press the NIDO WPS button for 1-3 seconds until the yellow LED appears.



- 4.** Open the NIDO application and configure the NIDO SMART PLUG.



 **VIDEOTUTORIAL**

To discover all the functions of the NIDO app, watch our video tutorials on our Youtube channel



**DOWNLOAD AND CONSULT
THE USER MANUAL**

nidopro.com/download/manuale-utente-nido.pdf

NIDO™
nidopro.com/en